



# 5 Rows Terrace

South Gosforth



SANDERSON  
YOUNG









## 5 Rows Terrace South Gosforth

This fabulous, four bedroom, mid terrace house provides a unique setting within South Gosforth with its local amenities including shops and restaurants, as well as being only a short distance from Gosforth High Street and South Gosforth Metro station. The property has been well maintained and offers versatile accommodation set over three floors.

To the front of the property is a large lawned garden which has been superbly landscaped with terrace and patio areas ideal for the summer months. To the rear of the property there is a delightful gravelled courtyard with double driveway.

---

**Price Guide:**  
Offers Over £485,000

---

4 2 1 D











Entrance vestibule | Large sitting room with Adams style fireplace and tall ceilings | Dining room with double doors connecting through to the kitchen | Kitchen/ Breakfast room with integrated appliances and double French doors leading to rear courtyard | Utility room |

First floor - Two large double bedrooms | Single bedroom | Stunning family bathroom with oval shaped bath and separate shower | Open plan staircase leads to roof space where there is a master bedroom suite with Velux windows.



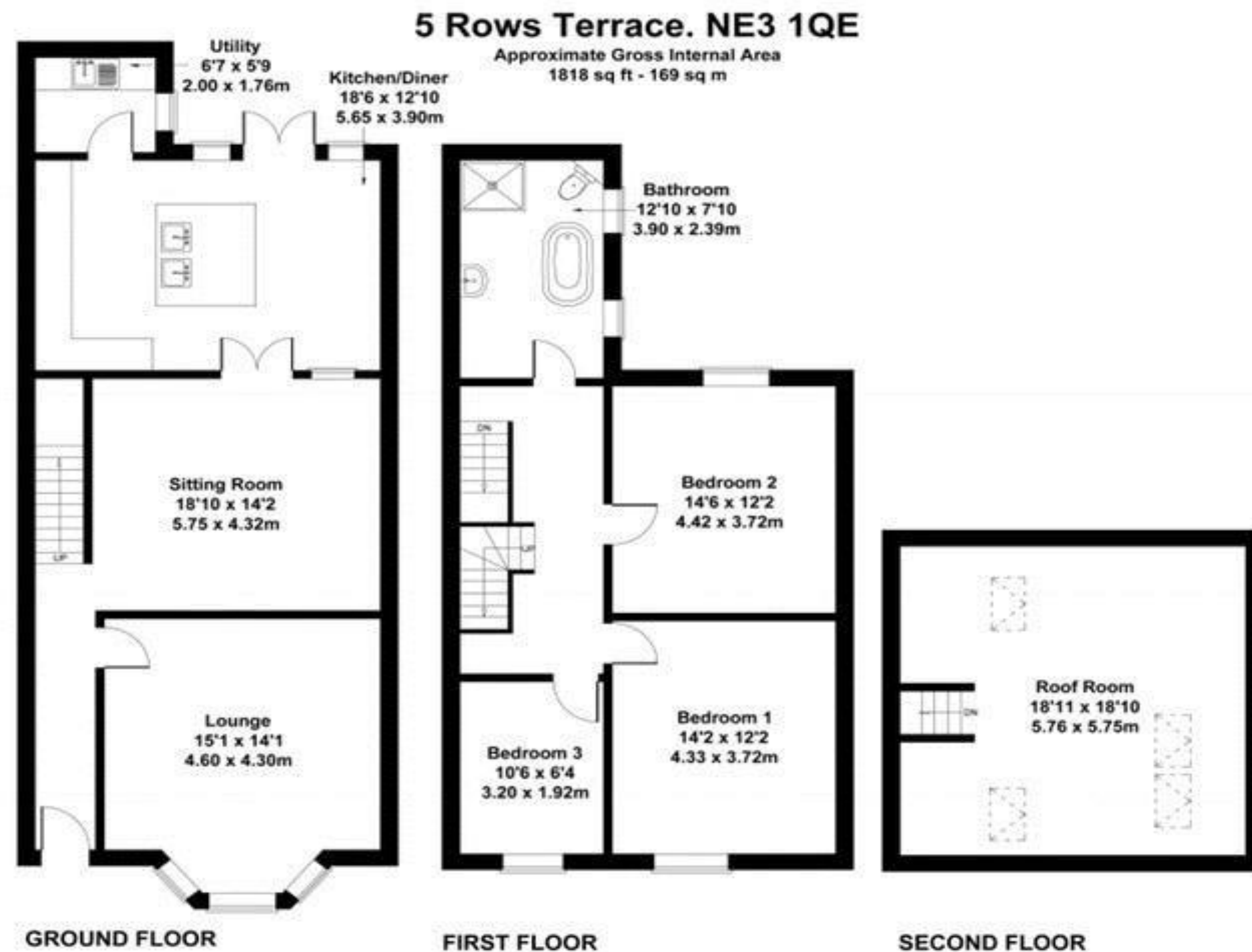
Debbie Brown  
0191 213 0033  
debbie.brown@sandersonyoung.co.uk







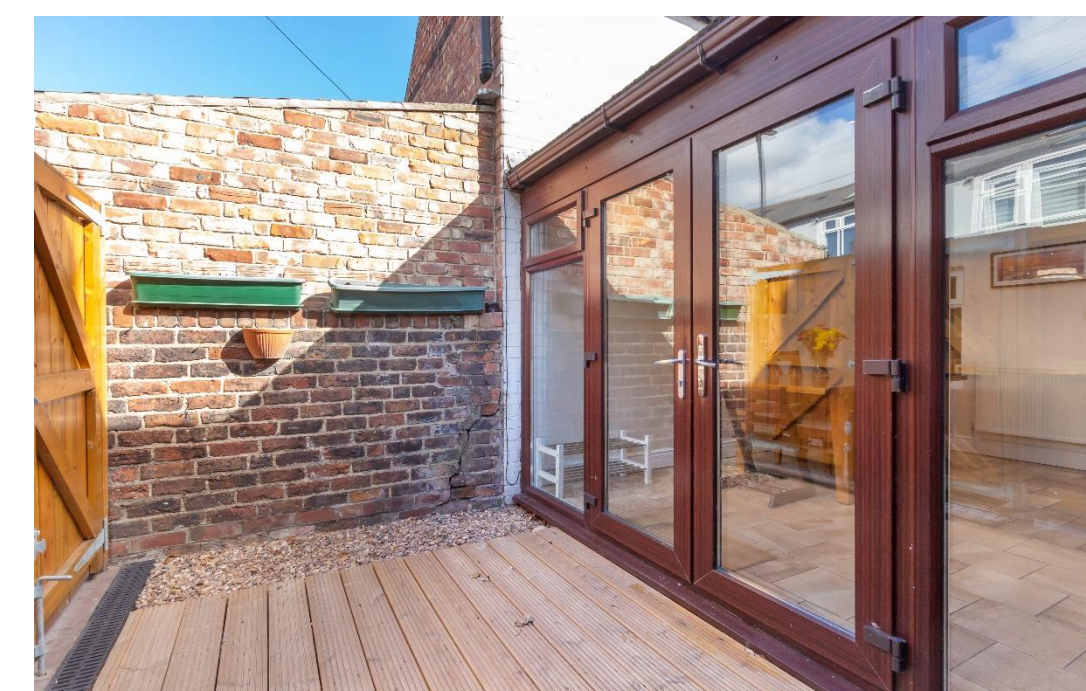




**SKETCH PLAN FOR ILLUSTRATIVE PURPOSES ONLY**

All measurements walls, doors, windows, fittings and appliances, their sizes and locations, are approximate only. They cannot be regarded as being a representation by the seller, nor their agent.

Produced by Potterplans Ltd. 2018



Externally - Large front garden with terraced areas | Rear courtyard | Double driveway

Services: Mains electric, gas, water and drainage | Tenure: Freehold | Council Tax: Band D | Energy Performance Certificate: Rating D







# 5 Rows Terrace

South Gostorth

